

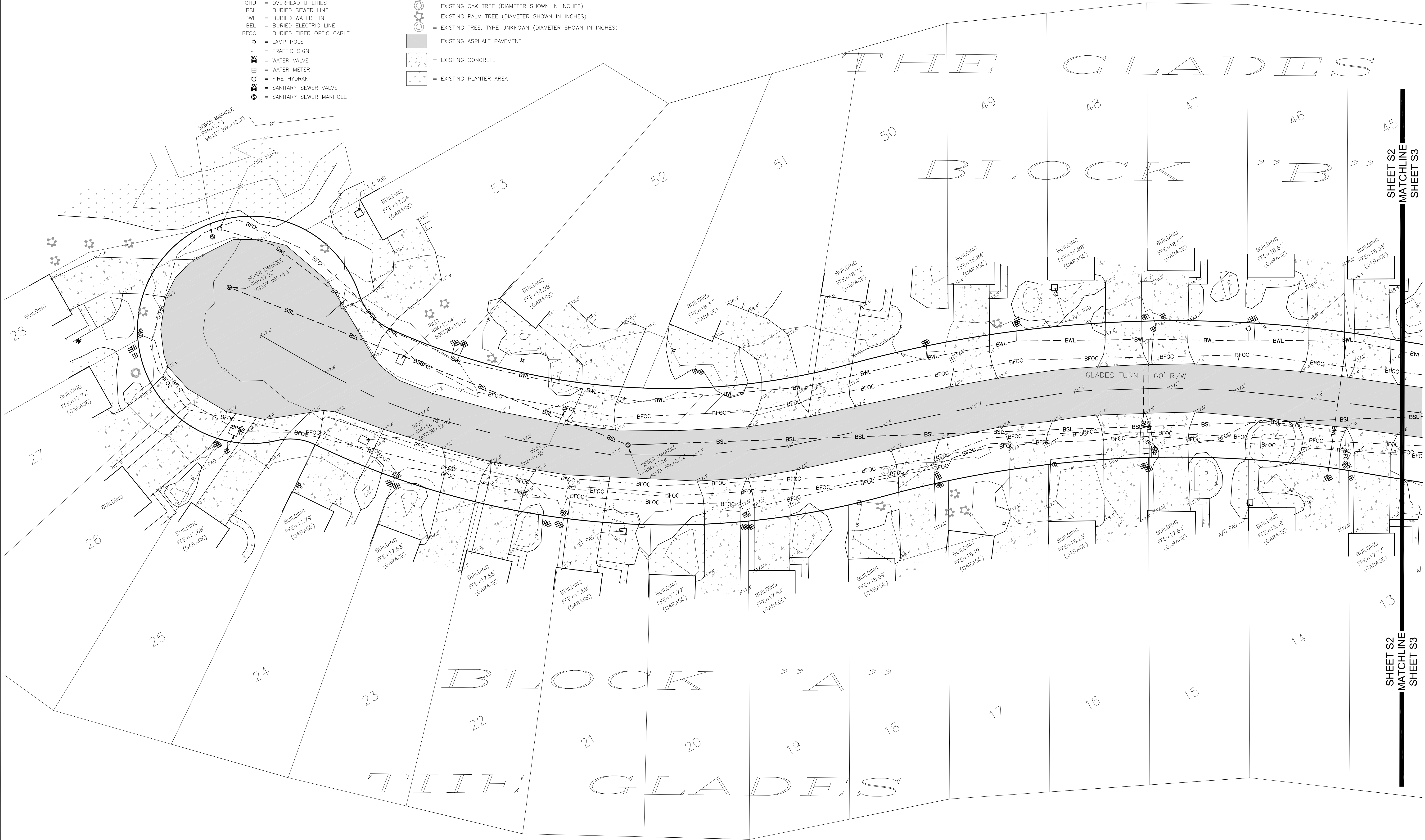
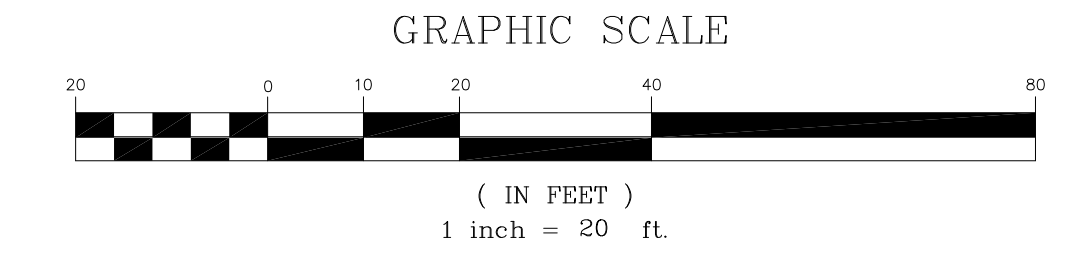


**SYMBOLS & ABBREVIATIONS:**

- |   |  |
|---|--|
| No. = NUMBER                              | ⊙ = STORM SEWER MANHOLE                                    |
| # = NUMBER                                | ⊕ = IRRIGATION CONTROL VALVE                               |
| — = DISTANCE NOT TO SCALE                 | ⊕ = GAS VALVE  |
| L.B. = LICENSED BUSINESS                  | ⊕ = CLEANOUT   |
| L.S. = LICENSED SURVEYOR                  | ⊕ = MAILBOX  |
| P.S.M. = PROFESSIONAL SURVEYOR AND MAPPER | ⊕ = TEMPORARY BENCHMARK                                    |
| INV. = INVERT                             | ⊕ = GUY ANCHOR   |
| ELEV. = ELEVATION                         | ⊕ = UTILITY POLE   |
| F.F.E. = FINISHED FLOOR ELEVATION         | ⊕ = FLAG POLE  |
| PVC = POLYVINYL CHLORIDE                  | ⊕ = ELECTRIC BOX   |
| C.M.P. = CORRUGATED METAL PIPE            | ⊕ = TELEPHONE BOX  |
| C.P.P. = CORRUGATED PLASTIC PIPE          | ⊕ = TELEVISION BOX   |
| R.C.P. = REINFORCED CONCRETE PIPE         | ⊕ = SPOT ELEVATION AT "X"                                  |
| R/W = RIGHT OF WAY                        | ⊕ = CONTOUR ELEVATION AT 1' INTERVALS                      |
| (TYP.) = TYPICAL                          | ⊕ = EXISTING PINE TREE (DIAMETER SHOWN IN INCHES)          |
| ET PAD = ELECTRIC TRANSFORMER PAD         | ⊕ = EXISTING OAK TREE (DIAMETER SHOWN IN INCHES)           |
| A/C = AIR CONDITIONER                     | ⊕ = EXISTING PALM TREE (DIAMETER SHOWN IN INCHES)          |
| OHU = OVERHEAD UTILITIES                  | ⊕ = EXISTING TREE, TYPE UNKNOWN (DIAMETER SHOWN IN INCHES) |
| BSL = BURIED SEWER LINE                   | ⊕ = EXISTING ASPHALT PAVEMENT                              |
| BWL = BURIED WATER LINE                   | ⊕ = EXISTING CONCRETE                                      |
| BEL = BURIED ELECTRIC LINE                | ⊕ = EXISTING PLANTER AREA                                  |
| BFOC = BURIED FIBER OPTIC CABLE           |  |
| ⊕ = LAMP POLE                             |  |
| ⊕ = TRAFFIC SIGN                          |  |
| ⊕ = WATER VALVE                           |  |
| ⊕ = WATER METER                           |  |
| ⊕ = FIRE HYDRANT                          |  |
| ⊕ = SANITARY SEWER VALVE                  |  |
| ⊕ = SANITARY SEWER MANHOLE                |  |

**INDEX OF SHEETS:**

- S1. OVERALL SITE, LEGEND, BENCHMARKS, AND NOTES (1"=100')
- S2. SITE DETAILS (1"=30')
- S3. SITE DETAILS (1"=30')
- S4. SITE DETAILS (1"=30')
- S5. SITE DETAILS (1"=30')
- S6. SITE DETAILS (1"=30')
- S7. PRI PROJECT 208.068, DATED 11/02/09 (1"=30')



NO.	DATE	APPL.	REVISION
1			
2			
3			
4			
5			
6			
7			

**PREBLE-RISH INC.**  
 CONSULTING ENGINEERS AND SURVEYORS  
 CIVIL SURVEYING • SITE PLANNING

UNLESS IT BEARS THE SIGNATURE AND SEAL OF A FLORIDA LICENSED SURVEYOR, THIS DRAWING, SKETCH, PLAT, OR MAP IS FOR INFORMATIONAL PURPOSES ONLY AND IS NOT VALID.

DATE: 05/28/13  
 CHECKED: DJB  
 DRAWN: FCR  
 DESIGNED: FCR  
 SCALE: 1"=20'

**TOPOGRAPHIC SURVEY**  
**SOUTH GLADES TRAIL**  
**IN SECTION 36, TOWNSHIP 3 SOUTH,**  
**RANGE 16 WEST, BAY COUNTY, FLORIDA.**

PROJECT NO. 211.169 SHEET S2

I:\proj\_2011\211169\_SOUTH\_GLADES\SURVEY DWA\211169-TS.DWG  
 11/18/13 10:58:35 AM



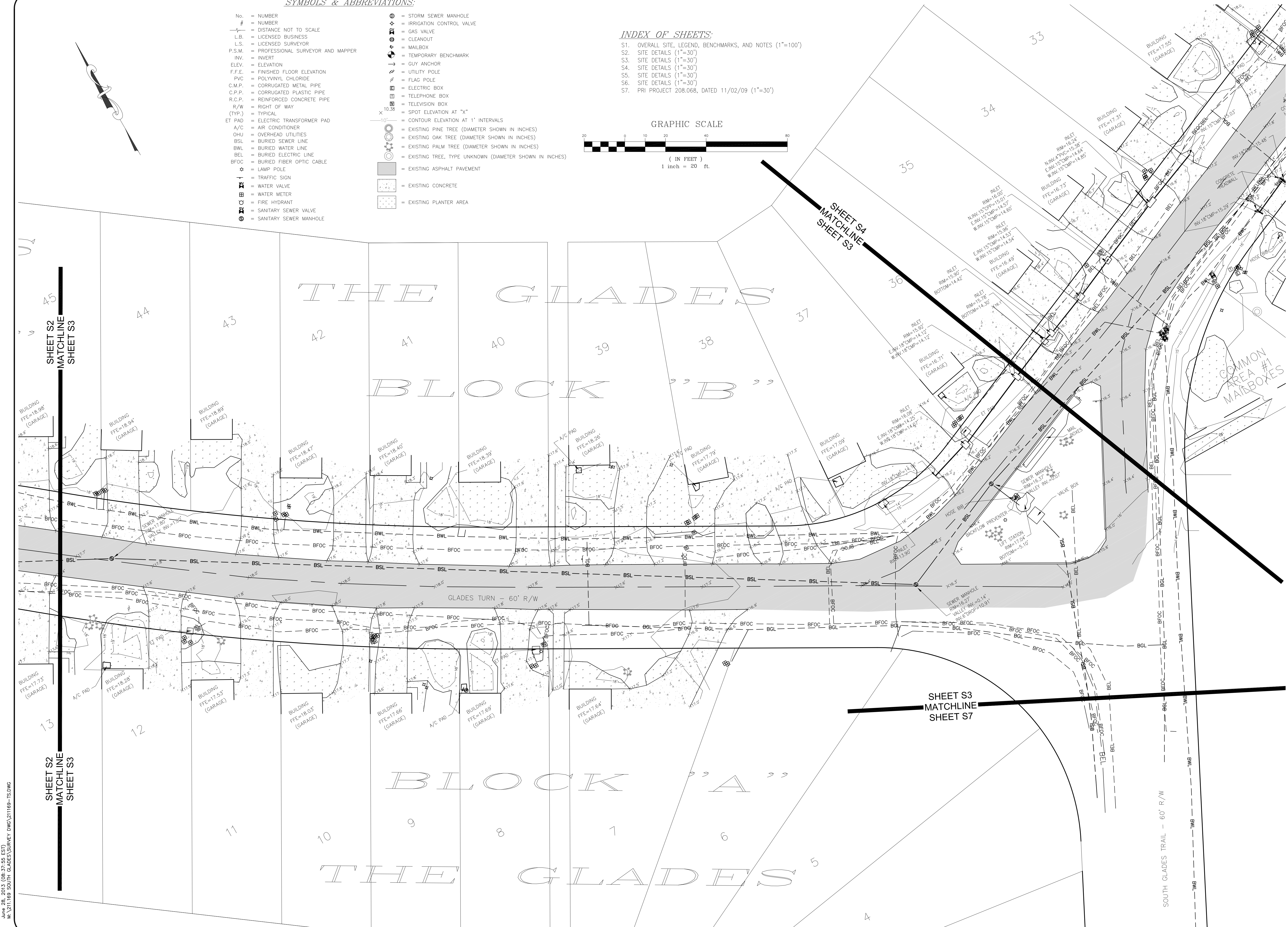
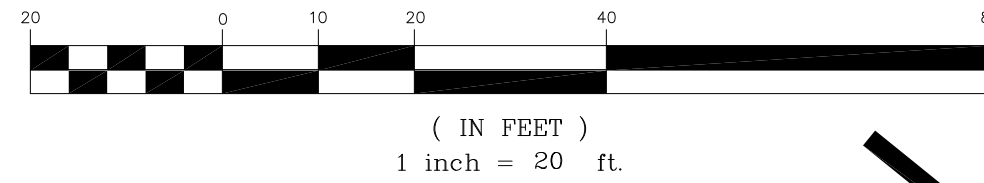
**SYMBOLS & ABBREVIATIONS:**

- No. = NUMBER
- # = NUMBER
- = DISTANCE NOT TO SCALE
- L.B. = LICENSED BUSINESS
- L.S. = LICENSED SURVEYOR
- P.S.M. = PROFESSIONAL SURVEYOR AND MAPPER
- INV. = INVERT
- ELEV. = ELEVATION
- F.F.E. = FINISHED FLOOR ELEVATION
- PVC = POLYVINYL CHLORIDE
- C.M.P. = CORRUGATED METAL PIPE
- C.P.P. = CORRUGATED PLASTIC PIPE
- R.C.P. = REINFORCED CONCRETE PIPE
- R/W = RIGHT OF WAY
- (TYP.) = TYPICAL
- ET PAD = ELECTRIC TRANSFORMER PAD
- A/C = AIR CONDITIONER
- OHU = OVERHEAD UTILITIES
- BSL = BURIED SEWER LINE
- BWL = BURIED WATER LINE
- BEL = BURIED ELECTRIC LINE
- BFOC = BURIED FIBER OPTIC CABLE
- \* = LAMP POLE
- ↑ = TRAFFIC SIGN
- ⊕ = WATER VALVE
- ⊕ = WATER METER
- ⊕ = FIRE HYDRANT
- ⊕ = SANITARY SEWER VALVE
- ⊕ = SANITARY SEWER MANHOLE
- ⊕ = STORM SEWER MANHOLE
- ⊕ = IRRIGATION CONTROL VALVE
- ⊕ = GAS VALVE
- ⊕ = CLEANOUT
- ⊕ = MAILBOX
- ⊕ = TEMPORARY BENCHMARK
- ⊕ = GUY ANCHOR
- ⊕ = UTILITY POLE
- ⊕ = FLAG POLE
- ⊕ = ELECTRIC BOX
- ⊕ = TELEPHONE BOX
- ⊕ = TELEVISION BOX
- ⊕ = SPOT ELEVATION AT "X"
- ⊕ = CONTOUR ELEVATION AT 1' INTERVALS
- ⊕ = EXISTING PINE TREE (DIAMETER SHOWN IN INCHES)
- ⊕ = EXISTING OAK TREE (DIAMETER SHOWN IN INCHES)
- ⊕ = EXISTING PALM TREE (DIAMETER SHOWN IN INCHES)
- ⊕ = EXISTING TREE, TYPE UNKNOWN (DIAMETER SHOWN IN INCHES)
- ⊕ = EXISTING ASPHALT PAVEMENT
- ⊕ = EXISTING CONCRETE
- ⊕ = EXISTING PLANTER AREA

**INDEX OF SHEETS:**

- S1. OVERALL SITE, LEGEND, BENCHMARKS, AND NOTES (1"=100')
- S2. SITE DETAILS (1"=30')
- S3. SITE DETAILS (1"=30')
- S4. SITE DETAILS (1"=30')
- S5. SITE DETAILS (1"=30')
- S6. SITE DETAILS (1"=30')
- S7. PRI PROJECT 208.068, DATED 11/02/09 (1"=30')

**GRAPHIC SCALE**



NO.	DATE	APPL.
1		
2		
3		
4		
5		
6		
7		

**PREBLE-RISH INC.**  
 CONSULTING ENGINEERS AND SURVEYORS  
 CIVIL • SURVEYING • SITE PLANNING

UNLESS IT BEARS THE SIGNATURE AND SEAL OF A FLORIDA LICENSED PROFESSIONAL ENGINEER OR SURVEYOR, THIS DRAWING, SKETCH, PLAN OR MAP IS FOR INFORMATIONAL PURPOSES ONLY AND IS NOT VALID.

DATE SHOWN: 05/28/13  
 CHECKED: DJB  
 DRAWN: FCR  
 DESIGNED: FCR  
 SCALE: 1"=20'

**TOPOGRAPHIC SURVEY**  
**SOUTH GLADES TRAIL**  
**IN SECTION 36, TOWNSHIP 3 SOUTH,**  
**RANGE 16 WEST, BAY COUNTY, FLORIDA.**

PROJECT NO. 211.169  
 SHEET S3

11/11/13 09:15 (58,79,58,58)  
 M:\211169 SOUTH GLADES\SURVEY DWA\211169-TS.DWG

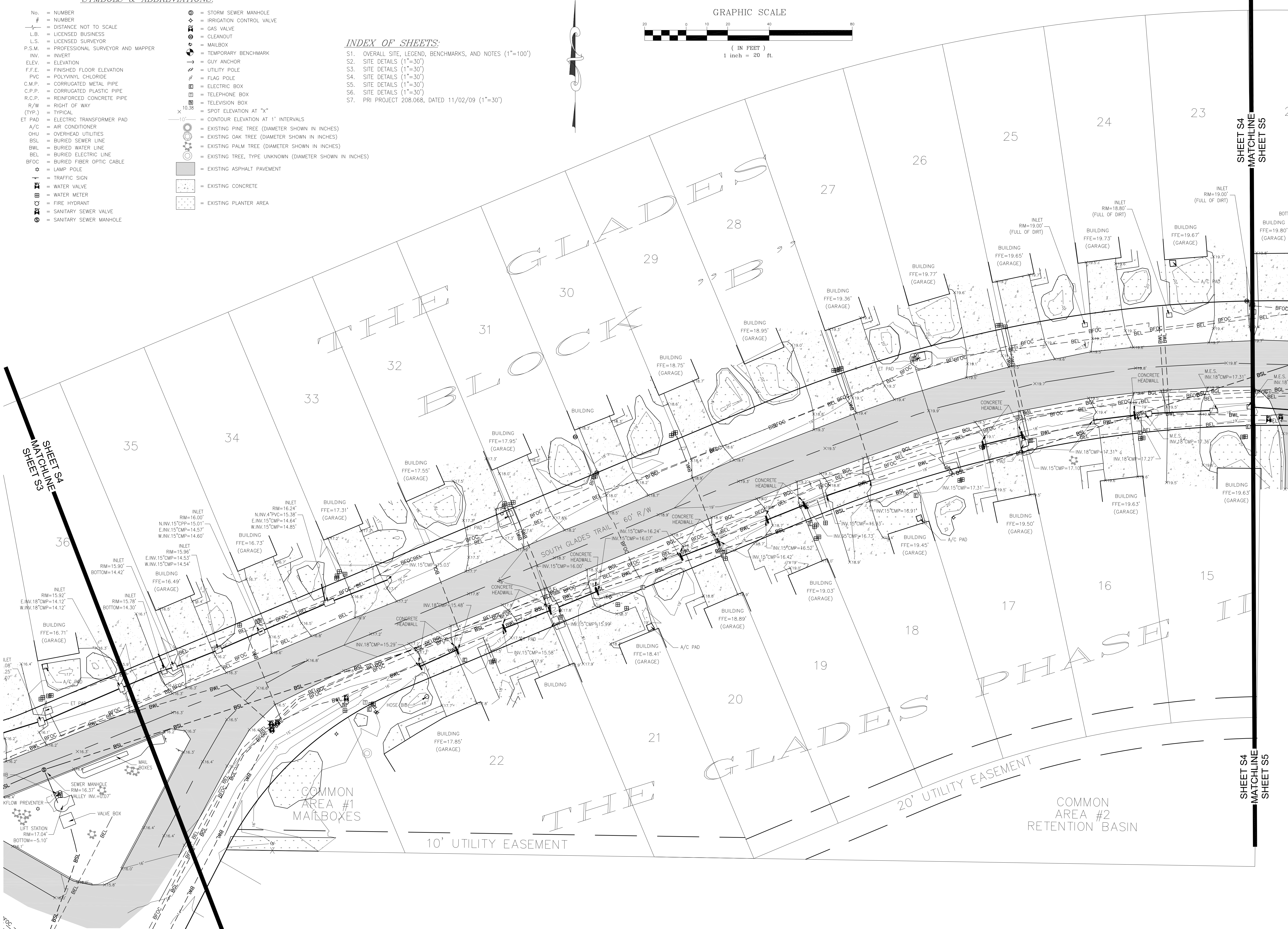
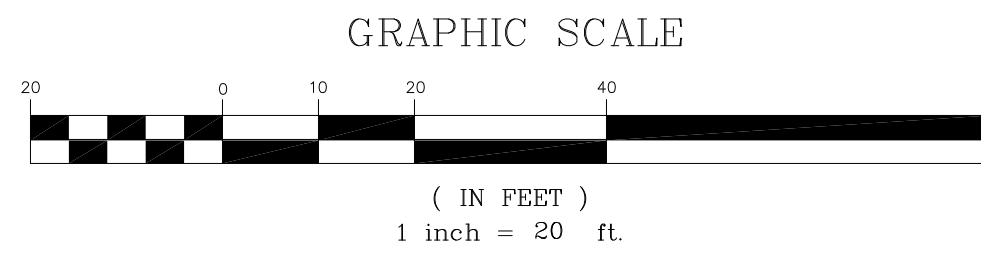


**SYMBOLS & ABBREVIATIONS:**

- No. = NUMBER
- # = NUMBER
- = DISTANCE NOT TO SCALE
- L.B. = LICENSED BUSINESS
- L.S. = LICENSED SURVEYOR
- P.S.M. = PROFESSIONAL SURVEYOR AND MAPPER
- INV. = INVERT
- ELEV. = ELEVATION
- F.F.E. = FINISHED FLOOR ELEVATION
- PVC = POLYVINYL CHLORIDE
- C.M.P. = CORRUGATED METAL PIPE
- C.P.P. = CORRUGATED PLASTIC PIPE
- R.C.P. = REINFORCED CONCRETE PIPE
- R/W = RIGHT OF WAY
- (TYP.) = TYPICAL
- ET PAD = ELECTRIC TRANSFORMER PAD
- A/C = AIR CONDITIONER
- OHU = OVERHEAD UTILITIES
- BSL = BURIED SEWER LINE
- BWL = BURIED WATER LINE
- BEL = BURIED ELECTRIC LINE
- BFOC = BURIED FIBER OPTIC CABLE
- ★ = LAMP POLE
- ⊕ = WATER VALVE
- ⊕ = WATER METER
- ⊕ = FIRE HYDRANT
- ⊕ = SANITARY SEWER VALVE
- ⊕ = SANITARY SEWER MANHOLE
- ⊕ = STORM SEWER MANHOLE
- ⊕ = IRRIGATION CONTROL VALVE
- ⊕ = GAS VALVE
- ⊕ = CLEANOUT
- ⊕ = MAILBOX
- ⊕ = TEMPORARY BENCHMARK
- ⊕ = GUY ANCHOR
- ⊕ = UTILITY POLE
- ⊕ = FLAG POLE
- ⊕ = ELECTRIC BOX
- ⊕ = TELEPHONE BOX
- ⊕ = TELEVISION BOX
- X = SPOT ELEVATION AT "X"
- = CONTOUR ELEVATION AT 1' INTERVALS
- ⊕ = EXISTING PINE TREE (DIAMETER SHOWN IN INCHES)
- ⊕ = EXISTING OAK TREE (DIAMETER SHOWN IN INCHES)
- ⊕ = EXISTING PALM TREE (DIAMETER SHOWN IN INCHES)
- ⊕ = EXISTING TREE, TYPE UNKNOWN (DIAMETER SHOWN IN INCHES)
- ⊕ = EXISTING ASPHALT PAVEMENT
- ⊕ = EXISTING CONCRETE
- ⊕ = EXISTING PLANTER AREA

**INDEX OF SHEETS:**

- S1. OVERALL SITE, LEGEND, BENCHMARKS, AND NOTES (1"=100')
- S2. SITE DETAILS (1"=30')
- S3. SITE DETAILS (1"=30')
- S4. SITE DETAILS (1"=30')
- S5. SITE DETAILS (1"=30')
- S6. SITE DETAILS (1"=30')
- S7. PRI PROJECT 208.068, DATED 11/02/09 (1"=30')



**PREBLE-RISH INC.**  
 CONSULTING ENGINEERS AND SURVEYORS  
 CIVIL SURVEYING • SITE PLANNING

**TOPOGRAPHIC SURVEY**  
**SOUTH GLADES TRAIL**  
**IN SECTION 36, TOWNSHIP 3 SOUTH,**  
**RANGE 16 WEST, BAY COUNTY, FLORIDA.**

PROJECT NO. 211.169 SHEET S4

NO.	DATE	APPL.	REVISION
1			
2			
3			
4			
5			
6			
7			

UNLESS IT BEARS THE SIGNATURE AND SEAL OF A FLORIDA LICENSED PROFESSIONAL SURVEYOR, THIS DRAWING, SKETCH, PLAN, OR MAP IS FOR INFORMATIONAL PURPOSES ONLY AND IS NOT VALID.

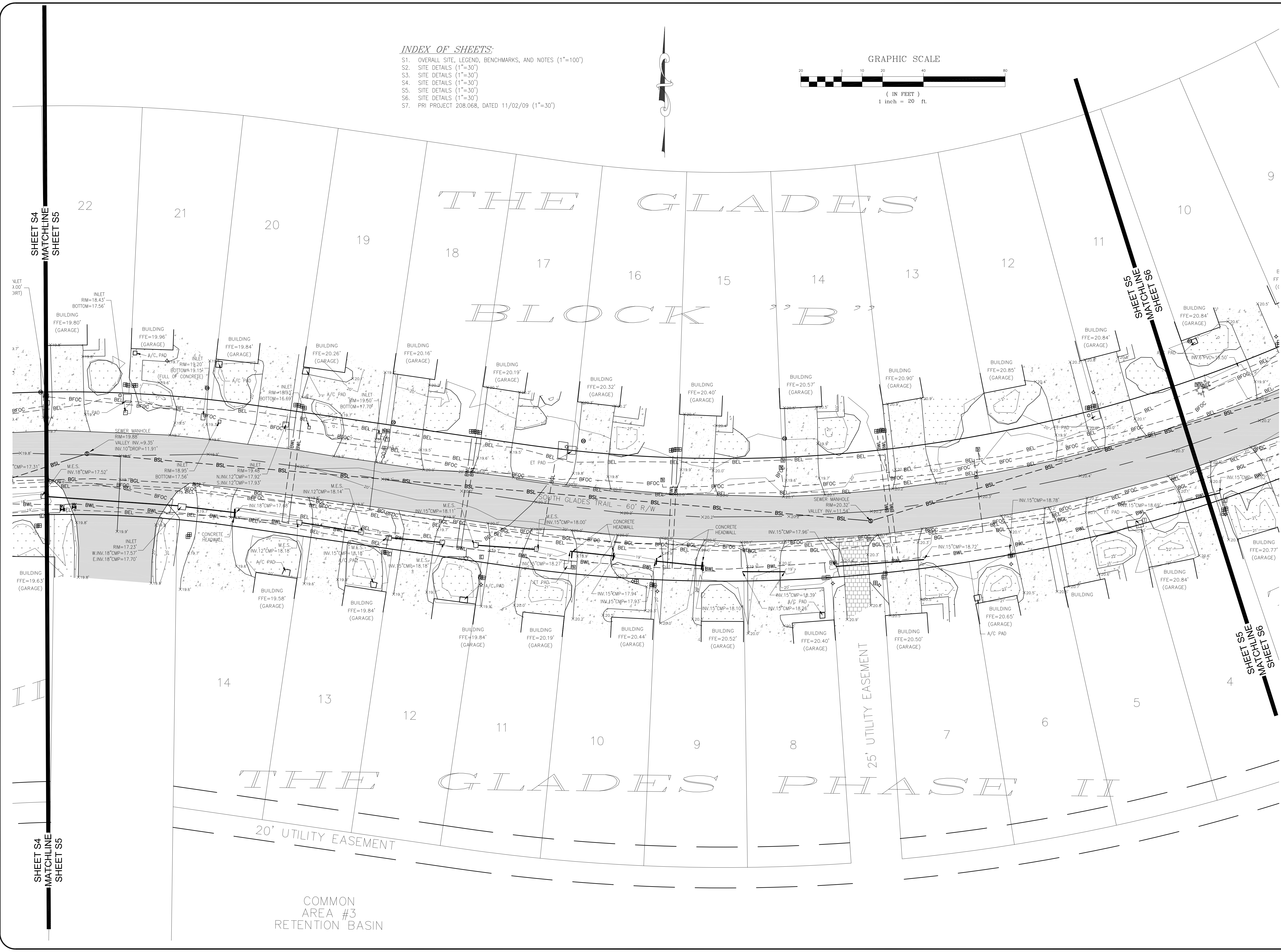
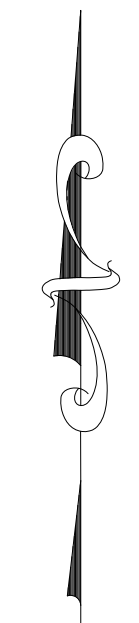
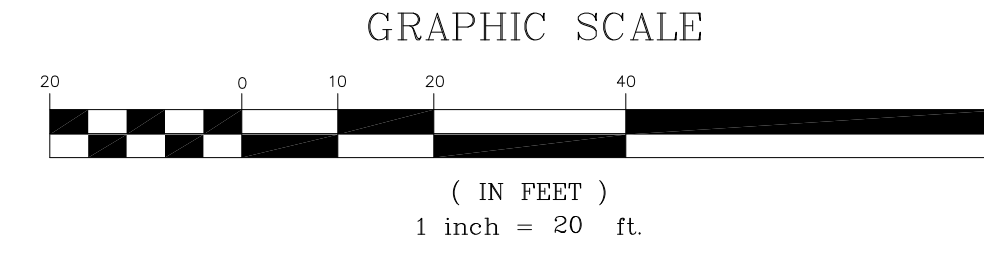
DATE: 05/28/13  
 CHECKED: DJB  
 DRAWN: FCR  
 DESIGNED: FCR

FREDERICK C. RISH, P.S.M.  
 PROFESSIONAL SURVEYOR/MAPPER  
 FLORIDA LICENSE NO. L.S. 6868

I:\proj\_2011\211169\_SOUTH\_GLADES\SURVEY\DWG\211169-TS.DWG  
 11/15/11 10:58:58 AM

\\ms01\proj\2011\1169\1169\_01.dwg (5/19/11 10:58:58 AM)  
\\ms01\proj\2011\1169\1169\_01.dwg (5/19/11 10:58:58 AM)

- INDEX OF SHEETS:**
- S1. OVERALL SITE, LEGEND, BENCHMARKS, AND NOTES (1"=100')
  - S2. SITE DETAILS (1"=30')
  - S3. SITE DETAILS (1"=30')
  - S4. SITE DETAILS (1"=30')
  - S5. SITE DETAILS (1"=30')
  - S6. SITE DETAILS (1"=30')
  - S7. PRI PROJECT 208.068, DATED 11/02/09 (1"=30')



NO.	DATE	APPL.	REVISION
1			
2			
3			
4			
5			
6			
7			

UNLESS IT BEARS THE SIGNATURE AND SEAL OF A FLORIDA LICENSED SURVEYOR, THIS DRAWING, SKETCH, PLAN, OR MAP IS FOR INFORMATIONAL PURPOSES ONLY AND IS NOT VALID.

FREDERICK C. BARNER, P.S.M.  
PROFESSIONAL SURVEYOR NUMBER: 18014-0006  
DATE SIGNED: 05/28/13  
FLORIDA LICENSE NO. L.S. 686

**PREBLE-RISH INC.**  
CONSULTING ENGINEERS AND SURVEYORS  
CIVIL SURVEYING • SITE PLANNING

1000 NW MAIN ST. SUITE 200  
PANAMA CITY, FL 32381  
(904) 225-2004

2000 CENTRAL AVE. EAST  
DADEBORNE, FL 33427  
(813) 942-7771

20 E. WASHINGTON ST.  
SANTA ROSA BEACH, FL 32089  
(904) 250-0919

3000 W. UNIVERSITY BLVD.  
DADEBORNE, FL 33427  
(813) 942-7771

DATE: 05/28/13  
CHECKED: DJB  
DESIGNED: FCR  
DRAWN: FCR

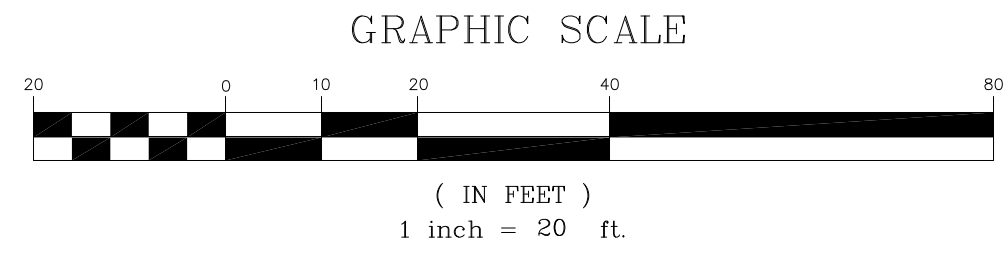
SCALE: 1"=20'

**TOPOGRAPHIC SURVEY**

**SOUTH GLADES TRAIL**  
**IN SECTION 36, TOWNSHIP 3 SOUTH,**  
**RANGE 16 WEST, BAY COUNTY, FLORIDA.**

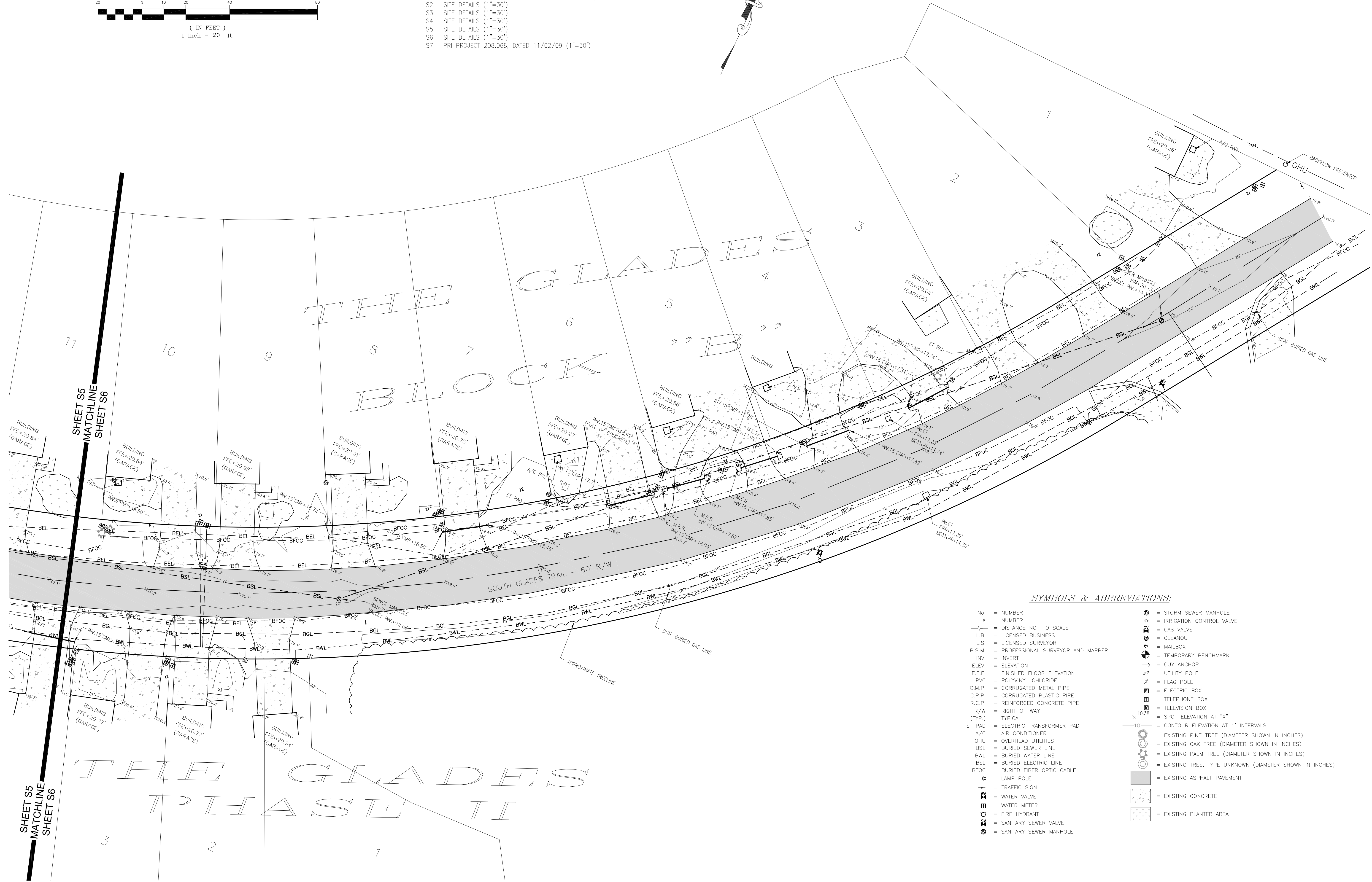
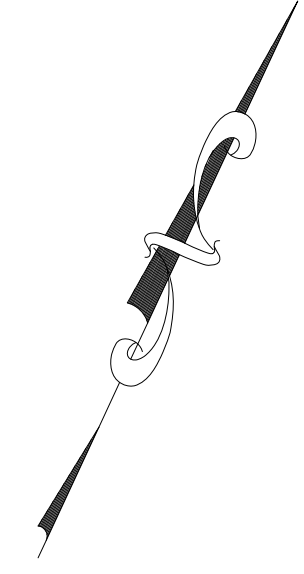
PROJECT NO. 211.169 SHEET S5





**INDEX OF SHEETS:**

- S1. OVERALL SITE, LEGEND, BENCHMARKS, AND NOTES (1"=100')
- S2. SITE DETAILS (1"=30')
- S3. SITE DETAILS (1"=30')
- S4. SITE DETAILS (1"=30')
- S5. SITE DETAILS (1"=30')
- S6. SITE DETAILS (1"=30')
- S7. PRI PROJECT 208.068, DATED 11/02/09 (1"=30')



**SYMBOLS & ABBREVIATIONS:**

- |   |  |
|---|--|
| No. = NUMBER                              | ⊗ = STORM SEWER MANHOLE                                    |
| # = NUMBER                                | ⊕ = IRRIGATION CONTROL VALVE                               |
| - = DISTANCE NOT TO SCALE                 | ⊘ = GAS VALVE  |
| L.B. = LICENSED BUSINESS                  | ⊙ = CLEANOUT   |
| L.S. = LICENSED SURVEYOR                  | ⊚ = MAILBOX  |
| P.S.M. = PROFESSIONAL SURVEYOR AND MAPPER | ⊛ = TEMPORARY BENCHMARK                                    |
| INV. = INVERT                             | ⊜ = GUY ANCHOR   |
| ELEV. = ELEVATION                         | ⊝ = UTILITY POLE   |
| F.F.E. = FINISHED FLOOR ELEVATION         | ⊞ = FLAG POLE  |
| PVC = POLYVINYL CHLORIDE                  | ⊠ = ELECTRIC BOX   |
| C.M.P. = CORRUGATED METAL PIPE            | ⊡ = TELEPHONE BOX  |
| C.P.P. = CORRUGATED PLASTIC PIPE          | ⊢ = TELEVISION BOX   |
| R.C.P. = REINFORCED CONCRETE PIPE         | ⊣ = SPOT ELEVATION AT "X"                                  |
| R/W = RIGHT OF WAY                        | ⊤ = CONTOUR ELEVATION AT 1' INTERVALS                      |
| (TYP.) = TYPICAL                          | ⊥ = EXISTING PINE TREE (DIAMETER SHOWN IN INCHES)          |
| ET PAD = ELECTRIC TRANSFORMER PAD         | ⊦ = EXISTING OAK TREE (DIAMETER SHOWN IN INCHES)           |
| A/C = AIR CONDITIONER                     | ⊧ = EXISTING PALM TREE (DIAMETER SHOWN IN INCHES)          |
| OHU = OVERHEAD UTILITIES                  | ⊨ = EXISTING TREE, TYPE UNKNOWN (DIAMETER SHOWN IN INCHES) |
| BSL = BURIED SEWER LINE                   | ⊩ = EXISTING ASPHALT PAVEMENT                              |
| BWL = BURIED WATER LINE                   | ⊪ = EXISTING CONCRETE                                      |
| BEL = BURIED ELECTRIC LINE                | ⊫ = EXISTING PLANTER AREA                                  |
| BFOC = BURIED FIBER OPTIC CABLE           |  |
| ⊘ = LAMP POLE                             |  |
| ⊙ = TRAFFIC SIGN                          |  |
| ⊚ = WATER VALVE                           |  |
| ⊛ = WATER METER                           |  |
| ⊜ = FIRE HYDRANT                          |  |
| ⊝ = SANITARY SEWER VALVE                  |  |
| ⊞ = SANITARY SEWER MANHOLE                |  |

**TOPOGRAPHIC SURVEY**

**SOUTH GLADES TRAIL  
IN SECTION 36, TOWNSHIP 3 SOUTH,  
RANGE 16 WEST, BAY COUNTY, FLORIDA.**

PROJECT NO. **211.169** SHEET **S6**

**PREBLE-RISH INC.**  
CONSULTING ENGINEERS AND SURVEYORS  
CIVIL SURVEYING • SITE PLANNING

124 MARINA DRIVE  
PANAMA CITY, FL 32406  
(850) 227-0208

1000 NW MANAT  
BREVARD, FL 32931  
(888) 624-2771

2000 CENTRAL AVE. EAST  
DADECOUNTY, FL 33445  
(888) 624-2771

DATE: 05/28/13  
CHECKED: DJB  
DRAWN: FCR  
DESIGNED: FCR

SCALE: 1"=20'

NO.	DATE	APPL.	REVISION
1			
2			
3			
4			
5			
6			
7			

UNLESS IT BEARS THE SIGNATURE AND SEAL OF A FLORIDA LICENSED SURVEYOR, THIS DRAWING, SKETCH, PLAN, OR MAP IS FOR INFORMATIONAL PURPOSES ONLY AND IS NOT VALID.

FREDERICK C. RISH, P.S.M.  
PROFESSIONAL SURVEYOR MAPPER  
FLORIDA LICENSE NO. L.S. 6585

DATE: 05-28-2013 09:39:58 EDT  
FILE: \211169 SOUTH GLADES\MARKET DWG\211169-TS.DWG